

HISTORICAL PLACE

Enoshima is an island with a great deal of history, and various traditional Japanese shrines, temples, trails and other popular sightseeing spots are scattered throughout the island.

me to
a Island
sawa.

EXCITING EVENTS

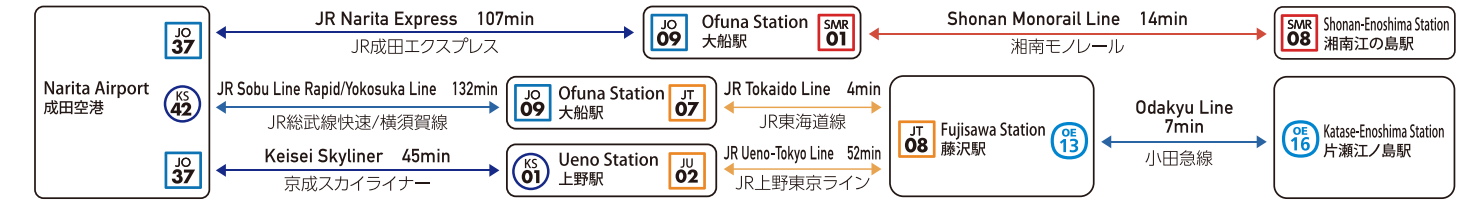
There are various kinds of events and festivals held throughout the year on Enoshima Island, ranging from historical traditional festivals such as the Fujisawa Enoshima Fireworks Festival to winter illumination events.

Access to Enoshima & Tickets

Less than an hour by train from Tokyo.

It takes about 50 min. by the JR Shonan-Shinjuku Line or Odakyu Line to get from Shinjuku Station to Fujisawa Station. To get to Enoshima, take the Odakyu Line, Enoden Line or Shonan-Monorail. Visitors can easily get around the island on foot.

✈ From Narita Airport By NARITA EXPRESS, from Narita Airport to JR Ofuna Station, it takes 105min.

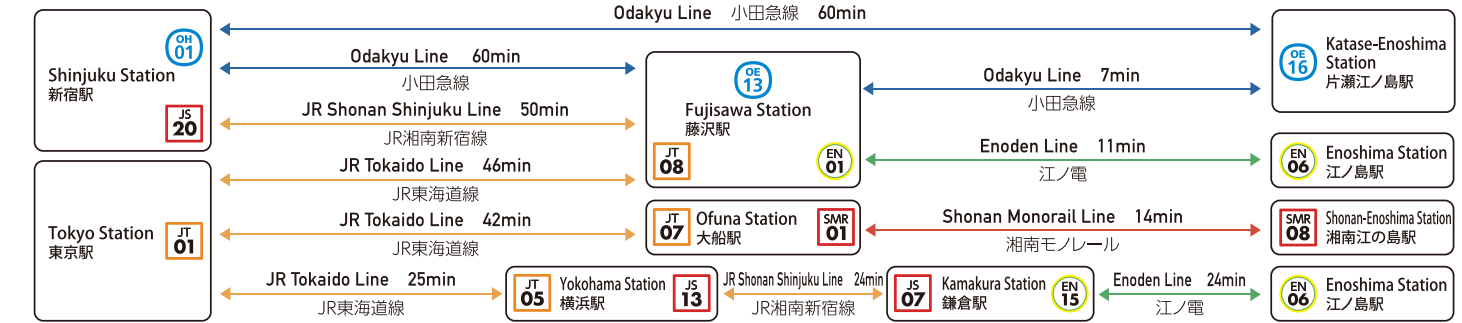


✈ From Haneda Airport



🚉 From major stations in Tokyo

* The time required varies depending on which train you take.



Tourist Pass Information

Unlimited access to some of special facilities on Enoshima Island.
It's cheaper than paying admission fees for each individual attraction.



ENOSHIMA 1day / ENOSHIMA 1day + night

Unlimited use of the Enoshima Escar, the Enoshima Sea Candle (Lighthouse Observation Tower), and the Enoshima Iwaya Caves for one day. Admission to the Samuel Cocking Garden is free until 5:00 p.m. If you plan to leave the garden after 5:00 p.m., please use ENOSHIMA 1 day + night. In addition, the tourist pass holders are entitled to discounts at restaurants and souvenir shops on Enoshima.
* Sales offices: Fujisawa City Tourist Center, Katase-Enoshima Tourist Information, Enoshima Escar (First Section) Ticket Office.

Enoden 1-day pass ticket "Noriorikun"

This is a ticket that allows you to board and disembark at any station on the entire Enoden Line as many times as you want during one whole day. You can receive many special benefits at Enoden wayside facilities, so you will be sure to enjoy your Enoden trip with "Noriorikun."
* Available from ticket vending machines at all stations.

ENOSHIMA/KAMAKURA FREEPASS

With this special ticket, you can enjoy a trip where you can stop off along the way at your leisure. Round-trip travel on the Odakyu Line + unlimited use of Enoden (all lines) and Odakyu Line (Fujisawa ↔ Katase-Enoshima)! There are around 20 establishments providing perks and discounts!
For more information about tickets, scan this code to visit the website!

Tourist Information



Fujisawa City Tourist Center
藤沢市観光センター
Sightseeing and accommodation information for Enoshima and Fujisawa area. English speaking staffs available. 1 minute walk to the south from Katase-Enoshima station of Odakyu line.
☎ 0466-22-4141
📍 2-20-13 Katase Kaigan, Fujisawa City
🕒 8:30-17:00 🗓 Open year round

Katase Enoshima Tourist Information
片瀬江の島観光案内所
Sightseeing and accommodation information for Enoshima and Fujisawa area. English speaking staffs available. 1 minute walk to the east from Katase-Enoshima station of Odakyu line.
☎ 0466-24-4141
📍 1-14-8 Katase Kaigan, Fujisawa City
🕒 8:30-17:00 🗓 Open year round

Enoshima Tourist Information
江の島観光案内所
Sightseeing information desk in Enoshima. English speaking staffs available. 12 minute walk to the South from Katase-Enoshima station of Odakyu line.
📍 1-3-2 Enoshima, Fujisawa City
🕒 9:00-17:00
🗓 Closed from December 31st to January 3rd.



ENOSHIMA, FUJISAWA

A BEAUTIFUL COASTAL AREA

JUST AN HOUR FROM TOKYO



SHONAN RESORT

The scenery of Mt. Fuji from Enoshima and Katase Kaigan are breathtaking, and the scenic views have been depicted on ukiyo-e prints from ancient times. The area offers a wide range of water sports, including yachting and surfing.

Welco
Enoshim
in Fuji

VARIETY FOODS

Enoshima Island is the home of a wide range of delicious foods. Due to its close proximity to the sea, Enoshima Island is particularly known for its fresh local seafood cuisine.



SPIRITUAL SPOTS

Enoshima Island is also known for its many spiritual sites (known in Japan as "power spots"). The various spiritual spots scattered throughout the island are believed to bring you luck and healing powers.



BEHIND STORY, BIRTH OF ENOSHIMA.

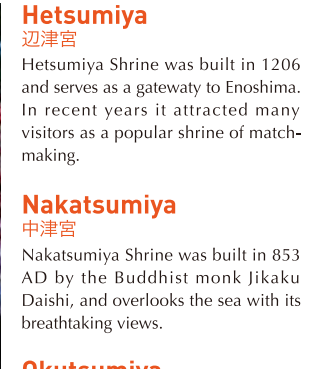
THE STORY OF THE FIVE-HEADED DRAGON AND BENZAITEN (HEAVENLY MAIDEN) VISIT ENOSHIMA AND EXPERIENCE ITS HISTORY!

Enoshima Engi 江島縁起

Enoshima Shrine is one of the three big shrines in Japan that is dedicated to the worship of Benzaiten, a Japanese Buddhist goddess of fortune, health, entertainment and transportation. The Enoshima Engi is an ancient scroll that depicts the legendary love story between Benzaiten and a five-headed dragon. According to legend, Benzaiten descended down to Earth causing the island of Enoshima to appear from the ground, and the five-headed dragon that plagued the seas of the region instantly fell in love with her, promising to cease its wrongdoings in exchange for her hand in marriage. According to the legendary love story between the Benzaiten and the five-headed-dragon, it transformed its shape into a hill known as the "Dragon's Mouth Hill" on the opposite shore facing the island and has remained there protecting the island of Enoshima to this day. Based on this legend, Enoshima is considered a spiritual spot for the fulfillment of love.



01 Enoshima Shrine 江島神社
Enoshima Shrine is a Shinto shrine in Enoshima that is dedicated to the worship of Benzaiten, a Japanese Buddhist goddess. Enoshima Shrine consists of three shrines, Hetsumiya, Nakatsumiya and Okutsumiya.



02 Hetsumiya 辺津宮
Hetsumiya Shrine was built in 1206 and serves as a gateway to Enoshima. In recent years it attracted many visitors as a popular shrine of match-making.

Nakatsumiya 中津宮
Nakatsumiya Shrine was built in 853 AD by the Buddhist monk Jikaku Daishi, and overlooks the sea with its breathtaking views.

Okutsumiya 奥津宮
Okutsumiya Shrine is the oldest of the three Enoshima shrines, and was originally the main shrine of Enoshima Shrine.



03 Dragon's Love Bell 龍恋の鐘 (Ryuren no Kane)
The Ryuren Bell of Love is a historic sight where many couples come to ring the bell to wish for eternal love.



04 Enoshima Iwaya Caves 江の島岩屋
Located in the west of Enoshima Island, the Iwaya Caves are a series of caves that were created by the erosion of waves over many years.



Ryuko-ji Temple 龍口寺
Ryuko-ji Temple is a traditional-style Nichiren Buddhist temple that consists of a gorgeous main shrine, as well as a 5-story wooden pagoda, white pagoda, bell and other structures.



LOCAL FOODS

Enoshima Island is famous for its wide range of local cuisine, from delicious fresh seafood to traditional Japanese sweets.



Grilled turban shell
Grilled turban shell is a specialty dish of Enoshima Island.



Kaisen don (seafood sashimi rice bowl)
Kaisen don is a traditional Japanese dish consisting of various sashimi slices served on top of rice.



Meoto (married couple) Manju (sweet steamed buns)
Meoto manju is a traditional confectionery products that can be found during the Enoshima pilgrimage.



Tako Senbei (octopus cracker)
Tako senbei is a Japanese fast food cracker made by pressing fresh octopuses.



SEASONAL EVENTS

There are various kinds of seasonal events and festivals held throughout the year on Enoshima Island.



Winter Jewel of Shonan
The "Jewel of Shonan" Festival is a popular winter illumination festival considered to be one of the "three major illumination events in Japan" that is held on Enoshima Island.



Summer Enoshima Lanterns
During the month of August, the long approach to Enoshima Shrine is lit up with Japanese lanterns.



Spring Shonan Enoshima Spring Festival
The Shonan Enoshima Spring Festival is a two-day celebration that accompanies the arrival of the tourism season and consists of a parade where children dress up in traditional attire.



Autumn Fujisawa Enoshima Fireworks Festival
The Fujisawa Enoshima Fireworks Festival fills the autumn skies with approximately 3,000 flower-shaped exploding projectiles, including 2-shaku (shell) fireworks with a diameter of 50cm.



Discover FUJISAWA

Please Post Photos of Your ENOSHIMA Memories

#EnoshimaMemories

Post a picture of your memories in Fujisawa with the hashtag #EnoshimaMemories

INSTAGRAM

https://www.discover-fujisawa.jp/

Visit this website for detailed tourist information about Enoshima and Fujisawa

ENJOY YOURSELF AT THE SHONAN FUJISAWA RESORT AREAS!

Enoshima Island is a resort area of Shonan Fujisawa, where visitors can enjoy recreational water sports, popular tourist attractions and delicious local cuisine. Each season offers a wide range of different activities and events for tourists to enjoy.



06 Enoshima Bentenbashi 江の島弁天橋
Bentenbashi is a bridge that links Enoshima Island to Katase Kaigan Beach and offers superb views of Mount Fuji.



07 Enoshima Samuel Cocking Garden 江の島サムエル・コッキング苑
The Samuel Cocking Garden is a 19th-century English-style garden located at the top of Enoshima Island.

SIGHTSEEING

There are many tourist attraction sites on Enoshima Island that you can enjoy with a resort-feeling. It is the home of historical shrines, temples, hot springs, a 19th-century English-style garden, tower and caves featuring tidal pools and Buddhist statues.



05 Enoshima Aquarium 新江ノ島水族館
Enoshima Aquarium, which is located in Katase Kaigan West Beach, features large tanks that recreate the ecology of Sagami Bay as well as a special jellyfish exhibition and other attractions.



08 Enoshima Sea Candle 江の島シーキャンドル
Enoshima Sea Candle is an observation tower and lighthouse located in the Enoshima Samuel Cocking Garden. Here you can enjoy a beautiful 360-degree panoramic view.



09 Chigogafuchi 稚児ヶ淵
Chigogafuchi is a small but beautiful rocky area in the western corner of Enoshima Island. Enjoy playing on the rocky area and seeing the boats arrive from Enoshima Bentenbashi.



10 Enoshima Yacht Harbor 江の島ヨットハーバー
The Enoshima Yacht Harbor is originally built as a sailing competition venue for the 1964 Tokyo Olympic Games, and was held again for 2020 Olympic Games.



11 Enoshima Island Spa 江の島アイランドスパ
Enoshima Island Spa is a place where you can enjoy the stunning ocean views while bathing. Baggage Storage (coin lockers) and currency exchange machines are available here.



ACTIVITIES

Enoshima Island offers a wide range of spots where visitors can enjoy various experiences, including water sports, island cruises and other Japanese cultural experiences.

Land Sports

Bicycle rental
Bicycle rental services are available in the Enoshima and Katase Kaigan Beach areas.

Beach volleyball
Beach volleyball is a popular sport that can be played for free at Kugenuma Kaigan. This area is known as the birthplace of beach volleyball in Japan.

Tennis court rental
Tennis lovers can rent tennis courts located on the rooftop of the seaside parking lot and enjoy playing private matches.

Walking course
Enjoy the walking trails inside Prefectural Shonankaigan Park at Katase Kaigan Beach.

Inline skating, skateboarding and BMX trial experience
Kugenuma Kaihin HUG-RIDE PARK offers facilities for visitors to enjoy inline skating, a Combi Pool for skateboarding and BMX.



Water sports
With its beautiful scenery and clear waters, Enoshima is the perfect place for visitors to enjoy a wide range of water sports, including canoeing, surfing, bodyboarding and SUP (stand up paddle boarding).



Yacht boarding experience
Experience yacht boarding around Enoshima Island on a dinghy or cruiser and enjoy the expansive views from the sea.



Cruising around Enoshima Island
A cruise is one of the most relaxing ways to take in the beautiful sights of Mt. Fuji from off the shore and take a lap around Enoshima.

Water Sports

Bicycle rental
Bicycle rental services are available in the Enoshima and Katase Kaigan Beach areas.

Beach volleyball
Beach volleyball is a popular sport that can be played for free at Kugenuma Kaigan. This area is known as the birthplace of beach volleyball in Japan.

Tennis court rental
Tennis lovers can rent tennis courts located on the rooftop of the seaside parking lot and enjoy playing private matches.

Walking course
Enjoy the walking trails inside Prefectural Shonankaigan Park at Katase Kaigan Beach.

Inline skating, skateboarding and BMX trial experience
Kugenuma Kaihin HUG-RIDE PARK offers facilities for visitors to enjoy inline skating, a Combi Pool for skateboarding and BMX.



Kimono rental
Rent beautiful kimonos at a reasonable rate and enjoy Enoshima while wearing the traditional Japanese attire. You may also leave your suitcases or other luggage here while you go out to enjoy the town.



Ukiyo-e printing experience
On Sundays from 13:00 to 17:00 at the Fujisawa Ukiyo-e Museum, ukiyo-e print making is offered to all for free. Experience traditional woodblock printing by using tools such as a baren to burnish reliefs from woodblocks on to washi paper. You can create your very own ukiyo-e print.



NIGHT TIME

While the daytime offers various activities and sightseeing attractions, visitors can head to the area surrounding Fujisawa Station during the evening, which offers a wide range of restaurants, cafes, bars, and shopping spots. Whether you're in a big group or with a loved one, you won't run out of things to do here.



MOKICHI CRAFT BEER モキチクラフトビール
Mokichi Craft Beer is a beer pub with a stylish interior where you can enjoy craft beer delivered directly from the brewery.



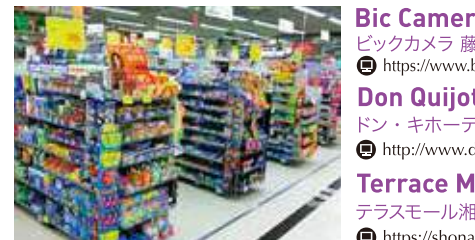
Sushi Izakaya Shichifuku 酒菜食彩 七福 藤沢店
Shichifuku is an izakaya-style pub that specializes in sushi and other local dishes.



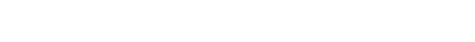
Winebar Rick's Café ワインバー リックス カフェ
Winebar Rick's Café is a wine bar that can be enjoyed by adults.

Shopping place

There are many stores where you can purchase tax-free electronics, cosmetics and souvenirs, as well as banks where you can exchange cash near Fujisawa Station.



Bic Camera Fujisawa Store ビックカメラ 藤沢店
https://www.biccamera.com/e.lj.hp.transer.com/bc/shop/shoplist/shop037.jsp



Don Quijote Fujisawa eki Minami guchi ドン・キホーテ 藤沢駅南口店
http://www.donki.com/en/store/shop_detail.php?add=1&shop_id=412



Terrace Mall Shonan テラスモール湘南
https://shonan.terracemall.com.e.ahy.hp.transer.com

Liquor & Snacks

Enjoy strolling through the streets of Fujisawa and visiting the many restaurants, Japanese-style izakaya pubs, bars and cafes located throughout the city that are open until late into the evening.



HOTELS

After sightseeing and enjoying the lively nightlife, stay in a stylish hotel around Fujisawa. Check hotel information at:



https://www.discover-fujisawa.jp/sightseeing/stay/enoshima



https://www.discover-fujisawa.jp/sightseeing/stay/fujisawa